

ADAM II™ LS

Fluorescence cell analyzer



● Total cell counting / Viability / Cell size

● Fluorescence expression (GFP/RFP/DAPI)

● Cell cycle assay

● Apoptosis assay





Fluorescence cell analyzer

ADAM II -LS, versatile fluorescence cell analyzer based on 4-channel (bright field, UV LED, blue LED, green LED) for life science laboratory, allows users to perform lots of assays for cells including total cell counting, viability, apoptosis, cell cycle, fluorescence expression with open tool system and similarity to flow cytometer.

Advantages

• Versatility (major functions)

Compatible with a wide variety of eukaryotic cells

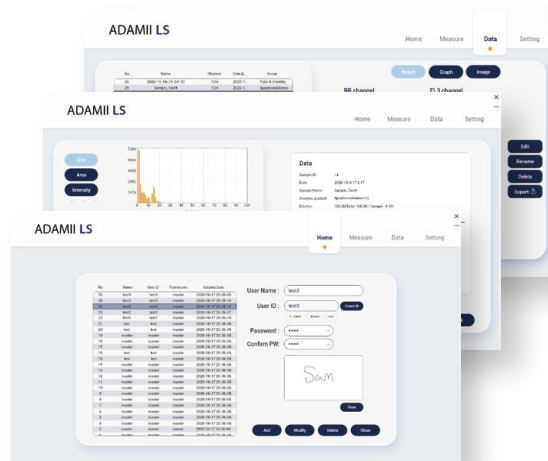
-  Total cell counting/Viability/Cell size
-  Fluorescence expression (GFP/RFP/DAPI)
-  Cell cycle assay
-  Apoptosis assay

• High-quality cell analysis

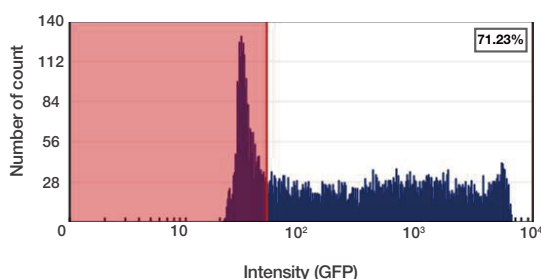
Performs 4-channel (bright field, UV, blue, and green LED)
Result with histograms and select cell size gating

• Comparison of flow cytometry

Dot plot / Easy GUI, report format, and compatibility with FCS file / No need for system maintenance

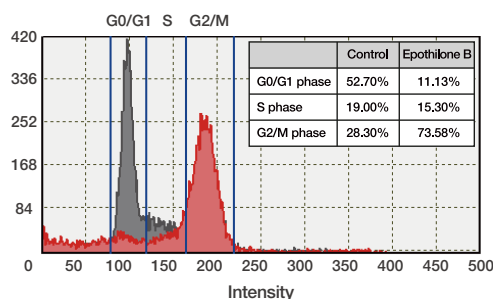


Fluorescence expression



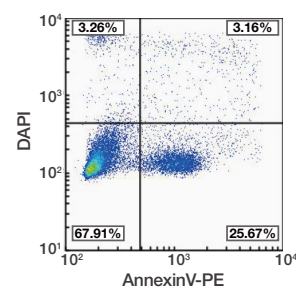
GFP transfected HeLa cell using
Neon™ Transfection System

Cell cycle assay



Jurkat cells treated with Etoposide B

Apoptosis assay (dot plot)



Jurkat cells treated
with Camptothecin

Specification

	Bright field channel	Fluorescence channel 1	Fluorescence channel 2	Fluorescence channel 3
Channel	BRIGHT	DAPI	GFP	RFP
Light source	530 LED (up-light)	370 LED	455 LED	530 LED
Excitation filter	-	378 nm	466 nm	543 nm
Emission filter	525 nm	447 nm	525 nm	561 nm

Copyright© Oct. 2021 NanoEntek, inc. All right reserved.

NanoEntek, Inc.

Head Office

12F, 5, Digital-ro 26-gil, Guro-gu, Seoul, 08389, Korea
Tel:+82-2-6220-7940/Fax:+82-2-6220-7999

NanoEntek America, Inc.

220 Bear Hill Road, Suite 102, Waltham, MA 02451, USA
USA Tel: +1-781-472-2558

website

www.nanoentek.com

e-mail

sales@nanoentek.com